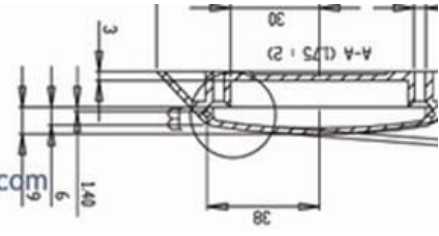


Prolite™

www.prolite.co.nz www.prolitemarine.com



PROLITE BULKHEADS (PBH)

Doc#13217.1

Features

- Watertight, IP66
- Vandal proof IK08
- Double insulated, all polymeric construction.
- Electronic ballasts/ drivers.
- Multiple conduit entry points.
- Size: 320x130x70 (DIAMOND) x 78mm (FLAT)



Flat diffuser. White skirt.

Benefits

- Black or white skirt.
- Reliable, long life.
- Energy efficient, low running cost
- Quick to install.
- Through bulkhead wiring option.
- UV resistant, salt resistant.
- Guard available. White Epoxy coated steel.



Diamond diffuser, black skirt.

Range

- PBHLED12/12: 12W LED 12-24vDC, 5,000K
- PBHLED12/36: 12W LED 36vDC, 5,000K
- PBHLED12/230: 12W LED 230volt, 5,000K
- PBHLED12/50: 12W LED 36-72vDC 5,000K
- PBHPL11/12: 11watt 12volt
- PBHPL11/24: 11watt 24volt
- PBHPL11/36: 11watt 36volt
- PBHPL18 18watt: 230/240volt
- PBHPL18/2: Twin 18watt 230volt
- PBHPL18/12: 18watt 12volt
- PBHPL18DUAL: 18watt 230/12volt



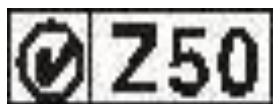
Petone Wharf NZ, PBHPL18 c/w green diffuser.
Installed 2002, still operating 8 hours 7 days in 2016.

Warranty

- Made in New Zealand, warranted 5 years. Warranty limited to repair or replacement of PBH only.

BEST QUALITY: BEST PRICE: INDOOR or OUTDOOR: MARINE TESTED.

Compliance: AS/NZS 61046. AS/NZS 3820



Prolite Lighting, 21 McMaster St. Greytown. New Zealand 5712. +64 6 304 7111.

tomkies@hotmail.co.nz

Agents, distributors and manufacturers.