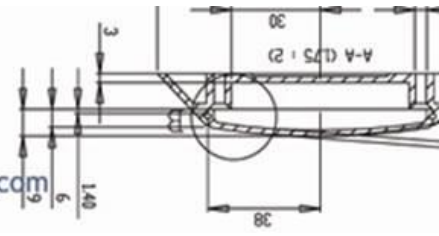


# Prolite™

www.prolite.co.nz www.prolitemarine.com



## PROLITE LED DRIVERS

Doc#10315.1



**SPLEDDRIP**



**SPLEDDR**



**DR24W**



**DR18W**

### Features and Range:

**SPLEDDR**; 12 Vdc. Constant current 1A. Small dimensions 70 x 35 x 20 mm. Internal IP22.

**SPLEDDRIP**; Constant 12 Vdc. 1A. Measures 145 x 50 x 28 mm. Indoor/ outdoor IP66. Double insulated.

**DR18W**; Constant voltage 24 Vdc. 1A. Measures 145 x 50 x 30 mm. Internal IP22. Double insulated.

**DR24W**; 10- 26 Vdc, Constant current 700 mA. Measures 85 x 54 x 32 mm. Internal IP22. Double insulated.

**PLEDDR60**; 24vDC, Constant voltage, 2.2 Amps. Measures 110 x 47 x 30 mm. 3 pin plug and lead. IP22.

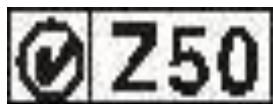
### Benefits:

- ✓ Reliable, long life.
- ✓ Economic.
- ✓ Quick to install.

### Warranty:

- Warranted 3 years. Warranty limited to repair or replacement of drivers only.

### Compliance: AS/NZS 61046. AS/NZS 3820



Prolite Lighting Ltd. 21 McMaster St. Greytown. New Zealand 5712. +64 6 304 7111. [tomkies@hotmail.co.nz](mailto:tomkies@hotmail.co.nz)

**Agents, distributors and manufacturers.**