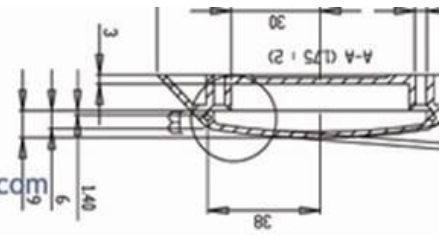


Prolite™

www.prolite.co.nz www.prolitemarine.com



PCLEDWH- Courtesy Light Round 6 White LED

PCLEDBU- Courtesy Light Round 6 Blue LED

Waterproof- IP68. 316 Stainless Steel.

Doc#12513.4

Uses:

- Interior and exterior— Marine, Domestic, Commercial.
- Through Hull Underwater Light, Cockpit Light, Step Light, Deck Light or Wash Light,
- Soffit Light, Stair Light, Night Light, Security Light, Path Light, Deck Light, under cupboard bench light.
- USE 32MM PVC CONDUIT AS HOUSING FOR DECK LIGHTS OR TO CONVERT TO SPIKE SPOT OR UPLIGHTER.

Features:

- | | |
|---|---|
| • Input 12v DC | 1.2mm (12G) Polished 316 Stainless Steel flange |
| • High efficiency electronics | Sealed construction IP68 |
| • Tinned copper conductor | Lock nut for through hull/panel installation. 26mm (1") Cutout. |
| • .3 watt consumption. | Moulded springs for deck or Gibrock type wall board. |
| • Ambient temp; -20 to +40° C. | Flange tested to 20 Newton (16 ft/lbs) |
| • Nylon 6 construction. | Moulded flange provides inherent strength. |
| • One year warranty from date of installation. | Can be covered with insulation |
| • 40mm (1 1/2") Flange, 25mm (1") deep. | Joints are best soldered or quality double crimp- heatshrink |

Accessories:

- SPLEDDR: 110-240v ac/ 12v dc driver. Will drive 26 PCLED lights.

Manufactured in New Zealand: Registered Copyright

More light output (6 LED): Absolutely waterproof: 316 Stainless Steel.

(Three combined features not commonly available elsewhere.)



Compliance: **AS/NZS 3820**



Prolite Lighting. 21 McMaster St. Greytown. New Zealand 5712. +64 6 304 7111. Fax +64 6 304 7213

Made in New Zealand.

tomkies@hotmail.co.nz

Agents, distributors and manufacturers.

