



PROLITE surface DOWNLITE LED MARINE LIGHT. Doc#15114.2

Designed, produced and certified in New Zealand.

Supplied complete with 15mm diameter watertight connector and 316 Stainless screws.

Domestic, commercial. Soffit, ceiling or wall. Indoor, outdoor, marine or garden.

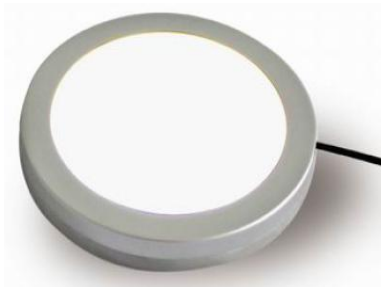
Features (LED the way to \$mart)

- Watertight, IP65.
- 50,000 hour approx equal to 40 incandescent lamp lives.
- High Bright 3528 SMD Epistar LED chips. Colour- warm white 3,500K.
- Dimmable. We recommend Kiwi Universal set to TE (Trailing).
- Anodic oxidised pre treated aluminium epoxy coated rear.
- UV resistant polymer diffuser and skirt.
- Instant start & non flicker, shockproof.
- Temperature range; -20° to + 46° C.
- **110-240v Downlites supplied complete with Drivers.**
- **Hint: Flush box in ceiling aids installation, contains driver and connector, place above light. Flush box cover provided.**



Benefits (LED the way to \$mart)

- Reliable, long life= approx 40 incandescent lamp lives.
- Energy efficient, low running cost.
- Effective 140° output.
- Distortion free and even light dispersion.
- Quick to install. **Centre entry.** Driver c/w quick connect plug.
- UV resistant, salt resistant.
- **Warranted 5 years.** Lamp life- >50,000 hours. PF=.89. IP65.
- Warranty limited to repair or replacement of DOWNLITE only.



Range (LED the way to \$mart)

- 110-240vAC, 12vDC, & 24vDC.
- Available White, Black or Metallic Silver- skirts.

Available ex stock

13 watt (approx = 100W incandescent-320 lux @ 3 Metre)

DL12LED13 12 volt 13watt LED 150mm x 22mm, 970LM,
DL36LED13 24 volt 13watt LED 150mm x 22mm, 970LM,
DLLED13 110-240 volt 13watt LED 150mm x 22mm, 850 LM,

20 watt (approx =150W Incandescent-430 lux @ 3 Metre)

DL24LED20 24volt 20watt LED 210mm x 22mm, 1520 LM,
DLLED20 110-240volt 20watt LED 210mm x 22mm, 1250 LM,

DR18W 18w LED Driver dimmable, constant current.

DR24W 24W LED Driver dimmable, constant current.

INDOOR, OUTDOOR or MARINE.

Bathrooms, soffits, gardens, ceilings, engine rooms, house, commercial, boats, RV or motor homes.



Compliance: AS/NZS61046. AS/NZS3820. AS/NZS3000



Prolite Lighting. 21 McMaster St. Greytown. New Zealand 5712. tomkies@hotmail.co.nz www.prolitemarine.com